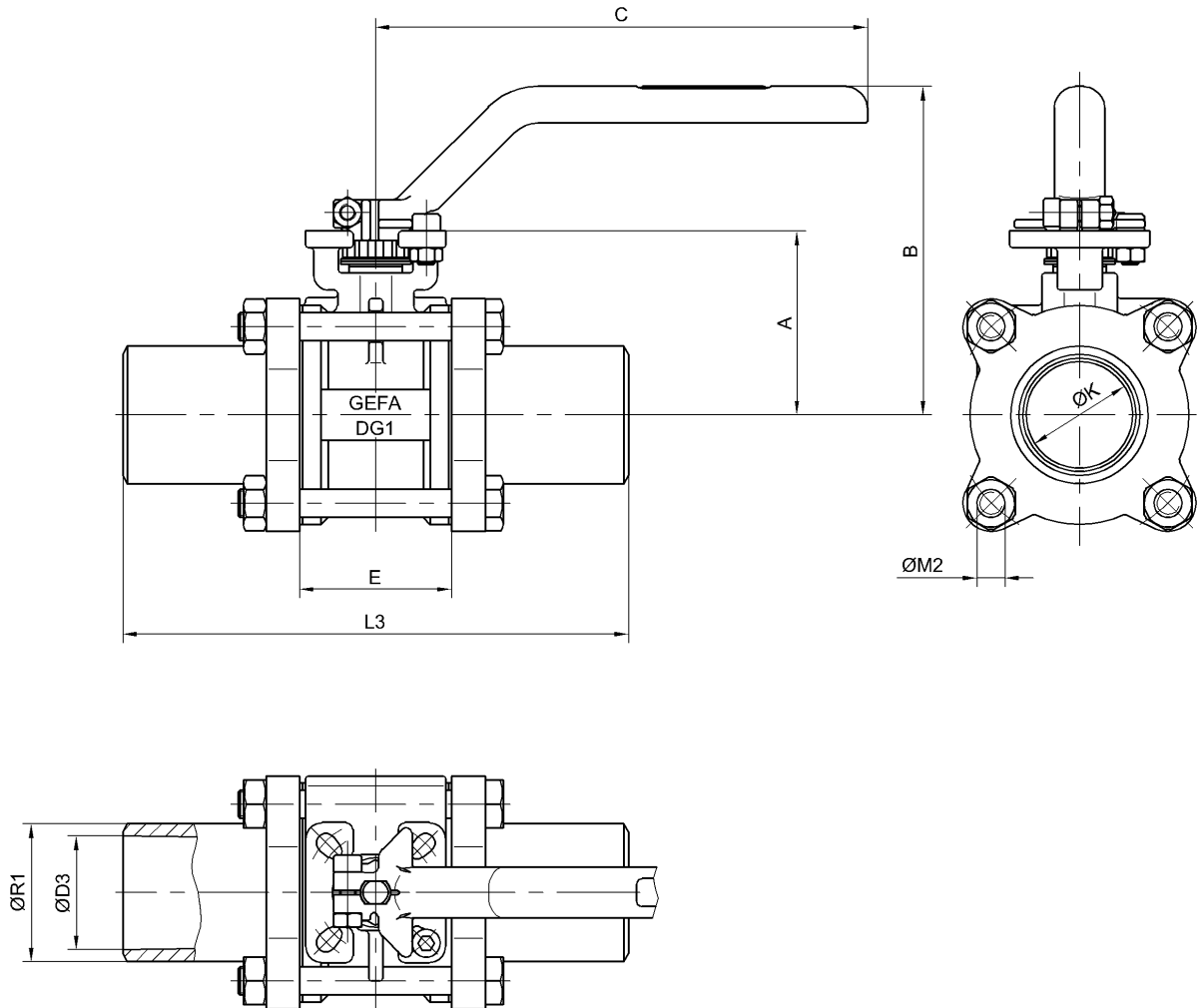


Antriebsanschluss nach DIN 3337 / ISO 5211 - siehe Datenblatt „Antriebsanschluss“
 Mounting plate acc. to DIN 3337 / ISO 5211 - see data sheet „mounting plate“



| DN | NPS | A | B | C | ØD3 | E | ØK | L3 | ØM2 | ØR1 | kg |
|----|--------|----|-----|-----|------|------|------|-----|-------|-----|-----|
| 8 | 1/4" | 35 | 55 | 120 | 8 | 21,5 | 12,7 | 150 | 4xM6 | 14 | 0,6 |
| 10 | 3/8" | 35 | 55 | 120 | 10 | 21,5 | 12,7 | 150 | 4xM6 | 18 | 0,7 |
| 15 | 1/2" | 43 | 90 | 160 | 15 | 26 | 16 | 160 | 4xM8 | 22 | 1,0 |
| 20 | 3/4" | 46 | 93 | 160 | 19,5 | 30,5 | 20 | 160 | 4xM8 | 28 | 1,3 |
| 25 | 1" | 50 | 97 | 160 | 25 | 38 | 25 | 170 | 4xM8 | 34 | 1,8 |
| 32 | 1 1/4" | 61 | 113 | 175 | 34,5 | 44 | 31,8 | 170 | 4xM10 | 43 | 2,7 |
| 40 | 1 1/2" | 66 | 118 | 175 | 40,5 | 52 | 38 | 180 | 4xM10 | 49 | 3,6 |
| 50 | 2" | 83 | 139 | 220 | 50,5 | 65 | 50,7 | 200 | 4xM12 | 61 | 6,2 |

Gewicht inklusive Handhebel / Weight including hand lever